

# Monday

## 1st AND 3rd

(May 4,18/ June 1,15/ July 6,20  
Aug 3,17)

SOCIAL RESIDENTIAL

9:30-10:00

MONTROSE (Post Falls)

10:45-11:45

COEUR D'ALENE MANOR

12:30-1:30

SCHOOL PLUS-

3:30-4:30

## 2nd AND 4th

(May 11, \*/ June 8,22/ July 13,27  
Aug 10,24) \*Summer Only

LAKWOOD RANCH

9:00-10:00

MICA FLATS GRANGE

11:00-12:00

\*FIGHTING CREEK STORE

12:30-1:30

HEARTLAND APTS.

2:15-3:00

SCHOOL PLUS

3:30-4:30

\* = Holiday

Questions?

Give us a call at:

208-772-7405 (Direct) or

208-772-5612 X 119

# Tuesday

## 1st AND 3rd \*Summer Only

(June 2,16/ July 7,21/ Aug 4,18)

BAYVIEW

9:30-10:30

Summer Plus

Hayden Kinder Center

12:30-2:30

## 2nd AND 4th \*Summer Only

(June 9,23/ July 14,28/ Aug 11,25)

HARDY LOOP

12:00-12:30

ROSE LAKE

1:00-2:00

VALLEY MART

2:30-3:30

ROSE LAKE JUNCTION PRODUCE

4:00-5:30

# Wednesday

## 1st And 3rd

(May 6,20/ June 3,17/ July 1,15

Aug 5, 19)

CDA 4 Kids

10:00-11:30

(June 17 & July 15)

TRANSITIONAL HOUSING

3:30-5:00

Kinder Center (Aug 19th)

9:00-3:00

\* = Holiday

# Wednesday

## 2nd & 4th \*Summer Only

(June 10,24/ July 8,22/ Aug 12,26)

Summer Plus

Ramsey

10:00-2:00

# Thursday

## 1st AND 3rd

(May 7,21/ June 4,18/ July 2,16  
Aug 6,20)

NEACHEN BAY

9:30-10:30

CARLIN BAY

11:30-12:45

WOLF LODGE

1:30-2:30

## 2nd AND 4th \*Summer Only

(June 11, 25/ July 9,23/ Aug 13, 27)

RATHDRUM CITY PARK

Summer Reading

11:00-1:00

(June 11, 25/ July 9)

Funicane Park

10:30-12:30

(July 23, 30/ Aug13)

Spirit Lake July 23 @ 3:00

# Saturdays

## 1st and 3rd

(May 2,16/ June 6,20/ \*July 11  
Aug 1,15)

WORLEY CITY HALL  
10:00-2::00

## \* 2nd Saturday July only

KSAL Outreach provides library service  
to the following senior communities

Bayview Community Center  
Best Land  
Coeur d'Alene Homes  
Fairwinds  
Four Seasons  
Guardian Angel (Post Falls)  
Generations (Rathdrum)  
Heritage Place  
Ivy Court  
Legends  
Life Care  
Pinewood  
Rose Terrace Cottages  
Rose Terrace Country Homes (Spirit Lk)  
Sylvan House  
Wells Spring Meadows

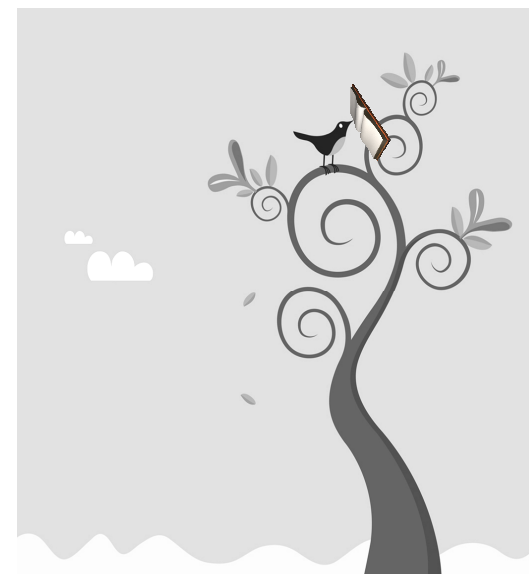
For more information please call  
772-5612 EXT 119 or 772-7405

**Libraries:**  
**ATHOL:** 208-683-2979 MON & WED 2:00-7:00; T,TH,FRI 12:00-5:00; Sat 10:00-2:00  
**MOBILE BRANCH:** 208-772-7405 CALL FOR SCHEDULE INFORMATION  
**HARRISON:** 208-689-3976 MON. 11:00-6:00; WED. 9:00-4:00; SAT. 11:00-5:00  
**HAYDEN:** 208-772-5612 MON.-THURS. 10:00-8:00; FRI. SAT. 10:00-5:00;  
SUN. 12:00-5:00  
**PINEHURST-KINGSTON:** 208-682-3483 MON. 1:00-8:00; TUES.- FRI. 10:00-5:00;  
SAT. 11:00-2:00  
**RATHDRUM :** 208-687-1029 MON, WED, THUR, 10:00-6:00; Tue 10:00-7:00;  
Fri, SAT 10:00-4:00  
**SPIRIT LAKE:** 208-623-5353 TUES, WED, THUR 2:00-7:00; MON, FRI 12:00-5:00; Sat 12:00-4:00  
**DeARMOND HEALTH:** 208-666-3498 MON. - FRI. 8:00-6:00  
**TALKING BOOKS:** 1-800-458- 3271  
**LIBRARY INFORMATION VIA INTERNET:** [www.ksalibraries.org](http://www.ksalibraries.org)

# Bookmobile

# Summer

# Schedule



## Phone Numbers

Phone: 772-7405  
[www.ksalibraries.org](http://www.ksalibraries.org)